



1.



9.



10.



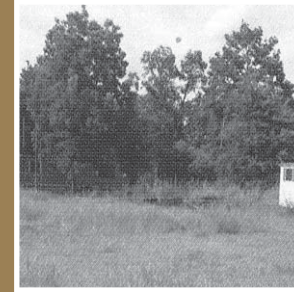
5.



2.



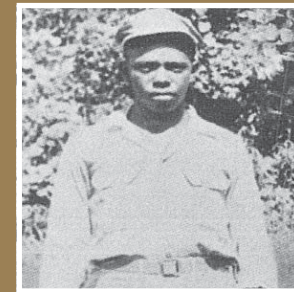
### MISSISSIPPI DELTA



6.



3.



7.



4.

### EMMETT TILL NATIONAL HISTORIC SITE

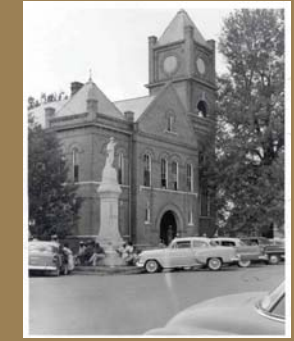
1. SUMNER COURTHOUSE
2. DELTA INN - SUMNER, MS
3. TUTWILER FUNERAL HOME
4. GLENDORA GIN
5. MILAM'S HOUSE - GLENDORA, MS
6. KING'S PLACE - GLENDORA, MS
7. CLINTON MELTON - SWAN LAKE
8. RIVER SITE - GLENDORA, MS
9. MOSES WRIGHT HOME
10. MONEY STORE



8.

This nationally significant area is eligible to apply for nomination as a National Historic Landmark preserving the sites of heartbreaking and pivotal events surrounding the kidnapping and murder of Emmett Till and the subsequent trial where the murderers were acquitted. These sites include the Tallahatchie County Courthouse in Sumner (restoration and exhibit development), the funeral home in Tutwiler where his body was prepared (acquisition and stabilization), the site on the Sunflower River near where his body was found (acquisition and boardwalk/platform development), the J.W. Millam home site in Glendora where Emmett's belongings were burned after the murder (acquisition, clearing and monument erected), the site of the murder of Clinton Melton and the King Place in Glendora (acquisition, clearing and erection of an interpretive pavilion), significant to the interpretation of the events related to the Emmett Till murder and the trial and the cotton gin / Emmett Till Historic Intrepid Center in Glendora (repair and environmental enclosure). Tallahatchie County has committed to this project through the acquisition of the former Wong grocery store directly across from the entrance to the Courthouse in Sumner. The building will be redeveloped as an annex to the courthouse and as the interpretive (orientation) center for the Emmett Till Historic Trail - and for the restored Courthouse. The Emmett Till Memorial Complex (a redeveloped industrial property on highway 49) is being developed as a site for tourism events, for local workforce training (through alliances with regional colleges), and educational and recreational events for local children. It is also recommended that the remains of the store in Money (in Leflore County), where the events began, be acquired, stabilized and developed as part of the trail.

### HISTORIC SUMNER, MISSISSIPPI

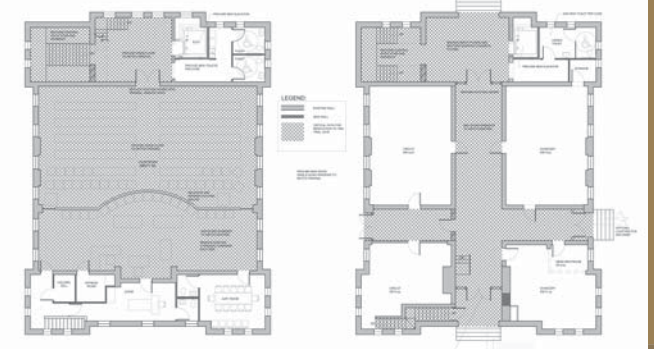


1955 TRIAL - HISTORIC COURTROOM

### HISTORIC SUMNER, MISSISSIPPI MAP



### COURTHOUSE RESTORATION PLANS



EXISTING SUMNER, MISSISSIPPI

# TALLAHATCHIE

# MISSISSIPPI

# EMMETT TILL NATIONAL SITE DEVELOPMENT

## TALLAHATCHIE COUNTY, MISSISSIPPI

### EXPECTED PROJECT BENEFITS

Investment in Tallahatchie County to establish this National Landmark area will create jobs, jumpstart the regions' economy and prepare the people of the area for the 21st Century by spurring private investment potential for the area and job growth. This area is rich in cultural/heritage assets that have not been developed so that tourism is able to take hold. Economic stimulus applied here will increase the opportunity for private investment, bring job creation and retention, allow for renewable energy retrofit and provide an educational opportunity as a 21st Century living classroom. This project merges with Delta Regional Authority and State of Mississippi efforts to develop heritage/cultural tourism in the Mississippi Delta Region and plays an important role in the development of the Delta Heritage Region and The Amercian Heritage Corridor. Economic stimulus applied to this project will also encourage economic development in the southern region of the US.

### EMMETT TILL MEMORIAL COMMISSION

(ETMC) established by the Tallahatchie County Board of Supervisors for the purpose of fostering racial harmony and reconciliation is endowed with the mission to seek federal, state and private funds and grants to establish and promote development of the National Landmark Area reflecting the events surrounding the murder of Emmett Till and the trial of Roy Bryant and J.W. Milam in 1955 in the Tallahatchie County Second District Courthouse. In addition to the initial task to restore the Courthouse in Sumner, Mississippi the commission is charged with the restoration of other buildings and sites of historical value and promotion of the educational tours of the courthouse and other sites in Tallahatchie County, Mississippi. The Emmett Till Memorial Day of Reconciliation at the Courthouse in Sumner in 2007 was initiated by the ETMC. The day began with the unveiling of the historic marker, inscribed with information regarding the murder of Emmett Till and the subsequent trial of Roy Bryant and J.W. Milam. The marker is poignantly placed just outside the doors of justice to encourage reflection, study and personal assimilation of all that took place at this site. Following the ceremony, participants were invited to take a bus tour of the sites significant to the Emmett Till story. Website: [www.etmctallahatchie.com](http://www.etmctallahatchie.com)

### EMMETT TILL NATIONAL HISTORIC TRAIL

Heritage tourists traveling from near and far are already reflecting upon the events and their place in history as they follow the designated trail of the Tallahatchie County Civil Rights Driving Tour. Markers placed along the tour at pertinent sites focus on the historic events and places related to the Emmett Till story. Visitors from across the nation and the world hear about the tour – and travel to the region to see for themselves and learn about the event that "galvanized the civil rights movement." Tour groups making advance reservations are treated to southern hospitality and are accompanied by tour guides sharing personal and community experiences, making their trip more meaningful. A major goal of the ETMC is the acquisition, stabilization and expanded interpretation of these sites to provide a National historic trail. Approximately 500k is needed to accomplish the immediate goal with 4.5 million accomplishing the goal it's entirety.

### ADDITIONAL TOURISM OPPORTUNITIES RELATED TO EMMETT TILL

The Emmett Till multi-purpose building in Sumner, and the Emmett Till Memorial Park in Glendora provide additional opportunities to develop events and programs related to Civil Rights Tourism. \$2 Million in funding is needed to prepare these properties to become a valuable part of the overall focus on heritage tourism development in the Delta region.

### TALLAHATCHIE COUNTY BOARD OF SUPERVISORS

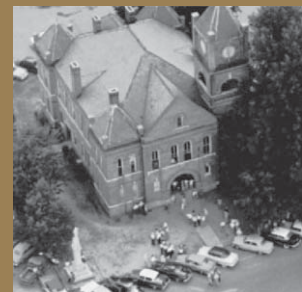
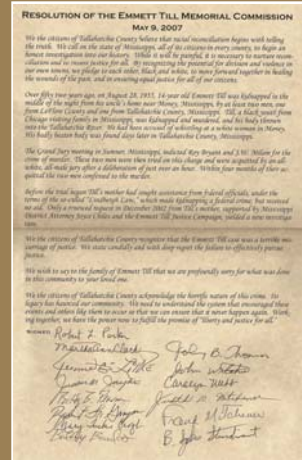
Tallahatchie County is deeply committed to this project. The Restoration of the Tallahatchie County Second District Courthouse in Sumner to its near-exact state during the 1955 trial has begun with architectural services funded through grants from the Mississippi Department of Archives and History, and a structural stabilization project funded by a 2008 federal appropriation. The Restoration of the Tallahatchie County Courthouse in Sumner, Mississippi and the development of an Interpretive Center across the street from the front door of the Courthouse are the first priorities of the Trail development. An additional \$8 million is needed to complete these projects.

FOR MORE INFORMATION:

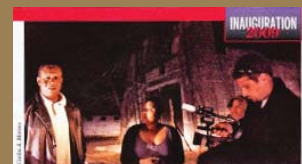
**BELINDA STEWART ARCHITECTS, P.A.**  
61 N. DUNN ST \* P.O. BOX 867  
EUPORA, MISSISSIPPI 39744  
BSA39744@BELLSOUTH.NET  
BELINDASTEWARTARCHITECTS.COM



### APOLOGY



FLORENCE MARS COLLECTION



MR. LITTLE (BOARD PRESIDENT) AT MONEY STORE  
FEB. 2009 JET MAGAZINE ARTICLE

COURTHOUSE RESTORATION AND  
EMMETT TILL INTERPRETIVE CENTER  
BUDGET: 8 million

EMMETT TILL NATIONAL HISTORIC TRAIL  
BUDGET: 550k - 4.5 million

EDUCATIONAL & RECREATIONAL SITES  
BUDGET: 2 million

# EMMETT TILL NATIONAL SITE DEVELOPMENT

## TALLAHATCHIE COUNTY, MISSISSIPPI

THE SIGNIFICANCE OF THE EVENTS - EMBODIED IN THE REMAINING SITES- IS CRITICALLY IMPORTANT TO THE HISTORY OF AMERICA. THE WORLD WATCHED AS THIS INJUSTICE UNFOLDED - AND THE WORLD CHANGED BECAUSE OF THIS GALVANIZING EVENT.



EMMETT TILL: IN SEPTEMBER, 1955 J.W. MILAM & ROY BRYANT WERE TRIED FOR THE BRUTAL MURDER OF 14 YEAR OLD EMMETT TILL. THE CASE WAS HIGHLY PUBLICIZED INTERNATIONALLY AND THE ACQUITTAL OF THE DEFENDANTS CHANGED THE COURSE OF HISTORY FOR THE NATION. AS MAMIE TILL MOBLEY STATED "MEN STOOD UP WHO HAD NEVER STOOD UP BEFORE".



THREE MONTHS AFTER THE TRIAL ROSA PARKS REFUSED TO GIVE UP HER SEAT ON THE BUS IN MONTGOMERY. IN ROSA PARKS MEMORIAL SERVICE JESSE JACKSON QUOTED HER AS SAYING "I THOUGHT ABOUT EMMETT TILL, AND I COULDN'T GO BACK".



"I HAVE A DREAM THIS AFTERNOON I HAVE A DREAM THAT THERE WILL BE A DAY THAT WE WILL NO LONGER FACE THE ATROCITIES THAT EMMETT TILL HAD TO FACE OR MEDGAR EVERS HAD TO FACE, THAT ALL MEN CAN LIVE WITH DIGNITY."

MR. MOSES WRIGHT - TRIAL WITNESS

### COURTHOUSE MARKER



1955 PHOTO OF THE EXISTING SUMNER, MISSISSIPPI COURTHOUSE

# TALLAHATCHIE

# MISSISSIPPI